



# Elite

## POLLED GENETICS

**Luster-P** Dam:  
Cherry-Lor Kboy Loma-ET, GP 82

**Drastic-P** MGD:  
Kings-Ransom Dorc Dextra-ET, EX 94

### LUSTER-P **A2/A2**

7HO14160 CHERRY-LILY ZIP LUSTER-P-ET  
ZIPIT-P X KINGBOY X SUPERSIRE

- #1 TPI POLLED SIRE AT +2737 GTPI
- A2 ZIPIT SON FROM AN IMPRESSIVE KINGBOY
- FAULTLESS LINEAR WITH COMPONENTS

### POWER TOOL-P

7HO12876 RI-VALRE POWER TOOL-P-ET  
POWERBALL-P X SUPERSIRE X OBSERVER

- +303 BPI POWERBALL SON
- IMPROVES COMPONENTS AND VOLUME
- RELIABLE CALVING EASE AND GREAT SEMEN FERTILITY

### DRASTIC-P **A2/A2**

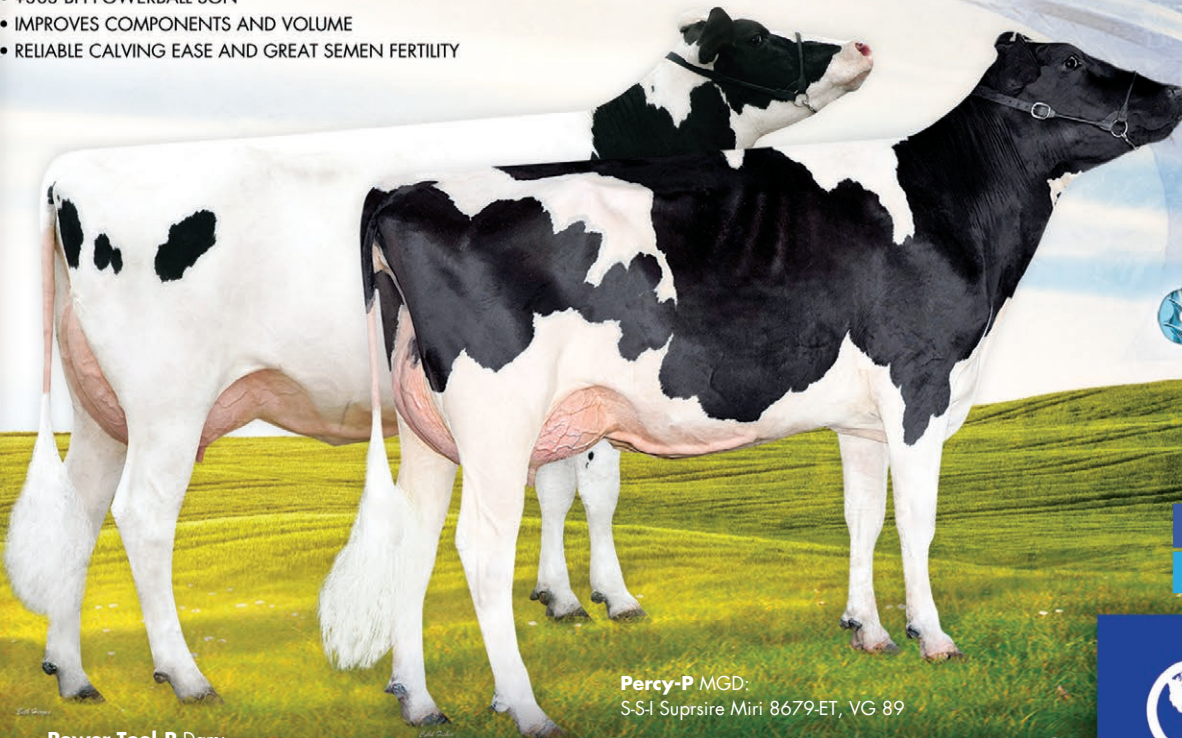
7HO14163 KINGS-RANSOM B DRASTIC-P-ET  
BANDARES X POWERBALL-P X DORCY

- #2 TPI POLLED SIRE AT +2731 GTPI
- A2 BANDARES SON BACK TO EX 94 KINGS RANSOM DOR DEXTRA
- INCREDIBLE MIX OF TYPE AND PRODUCTION

### PERCY-P **A2/A2**

7HO13710 S-S-I EXACTLY PERCY-P-ET  
EXACTLY X ERASER P X SUPERSIRE

- +292 BPI FROM AN ERASER SISTER TO JEDI
- GREAT UDDER ATTACHMENTS AND TEAT LENGTH
- IMPROVES COMPONENTS AND FERTILITY



**Power Tool-P** Dam:  
Swampy-Hollow  
Hope, VG 86

**Percy-P** MGD:  
S-S-I Suprsire Miri 8679-ET, VG 89



## WORLD WIDE SIRES

PO Box 7538 • Shepparton • 3632 Victoria  
Phone (03) 5831 5559 • Fax (03) 5822 0005  
info@wwsaustralia.com • www.wwsires.com



## WWS

BY DESIGN...NOT CHANCE