

# MONTROSS

7HO12165 BACON-HILL MONTROSS-ET

**MOGUL X BOLTON X ROLEX**

- 2773 TPI, +843 NM\$, good fertility 1.6 SCR
- Extreme production +3074 PTAM, +91 PTAP, +87 PTAF

# JEDI

7HO13250 S-S-I MONTROSS JEDI-ET

**MONTROSS X SUPERSIRE X BOOKEM**

- 2821 TPI; Combines type +2.06 PTAT and production +2624 PTAM
- Excellent fertility: 2.9 FI and 2.5 SCR, with +888 NM\$

# MEGAMAN

7HO13302 S-S-I MONTROSS MEGAMAN-ET

**MONTROSS X MASSEY X MINOS**

- 2754 TPI with great fertility: 2.3 FI and 2.7 SCR
- +885 NM\$ and 6% SCE

# DUKE

250HO13267 S-S-I MONTROSS DUKE-ET

**MONTROSS X SUPERSIRE X SNOWMAN**

- 2791 TPI with high production +2699 PTAM
- Outstanding type +2.15 PTAT, and +874 NM\$



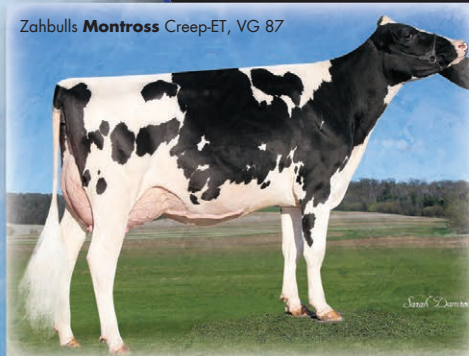
MONTROSS

# Montross & sons

## VALUE ADDED PROFITABILITY

### BY DESIGN... NOT CHANCE

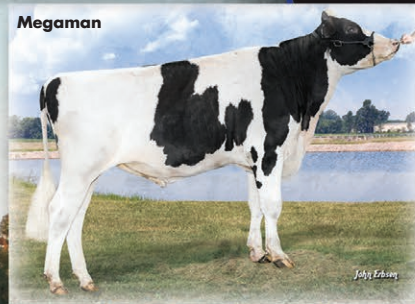
Zahbulls **Montross** Creep-ET, VG 87



Jedi



Megaman



Duke



## WORLD WIDE SIRES, LTD.®

www.wwsires.com • Email: info@wwsires.com • Fax: 559.741.2828

5545 Avenida de los Robles • Visalia, CA 93291 U.S.A. • Tel: 559.622.2222



Product of the USA