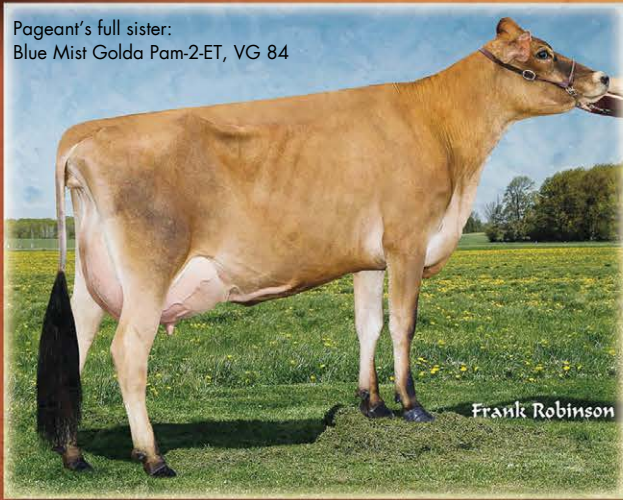


FATHER AND SON DUO

COMPONENTS, TYPE AND UDDER IMPROVERS

Pageant's full sister:
Blue Mist Golda Pam-2-ET, VG 84



BLUE MIST GOLDA PAGEANT-ET

PAGEANT

A HIGH RANKING GOLDA SON

Golda x Jupiter x Impuls

High fat and protein components with total volume

Great rear udder attachments and overall type

Good SCR and Productive Life

312708 GR OOMSDALE TBONE GOLDA-ET

GOLDA

A BREED LEADER FOR TOTAL PERFORMANCE!

Ranks at the top of the breed for MILK, FAT, PROTEIN AND TYPE

Daughters have ample dairy strength and excellent feet and legs

Close teat placement and high, wide rear udders



Ahlem Golda Dream #392, VG 84

Buttercrest Golda Frill-P, VG 85

WORLD WIDE SIRES • NEW ZEALAND

www.wwsiresnz.co.nz

Email: office@wwsires.co.nz • Free Phone: 0800 60 70 70

