



Ammon-Peachey  
*Shauna*  
**SUPER DAM**

*Amazing transmitter!*

# **SUPERSIRE**

7HO11351 Seagull-Bay Supersire-ET **ROBUST X PLANET X SHOTTLE**

gender  **SELECTed** FERTILITY  +

**ROBOMAXX**  **OPTIFEED** 

ROBOTMILKER READY

**HIGH PRODUCTION**  **COMPONENTS** 

WORLD WIDE INDEXES • [WWW.WWSIRES.COM](http://WWW.WWSIRES.COM)



*Patty Jones*

Seagull-Bay Ssire Debra-ET

*Wall Paper*

# THIS PROVEN SUPERSTAR:

- Is an extreme transmitter for Milk
- Has excellent combined Fat and Protein
- Ranks as an elite SCR sire
- Sires moderate sized daughters that calve easily

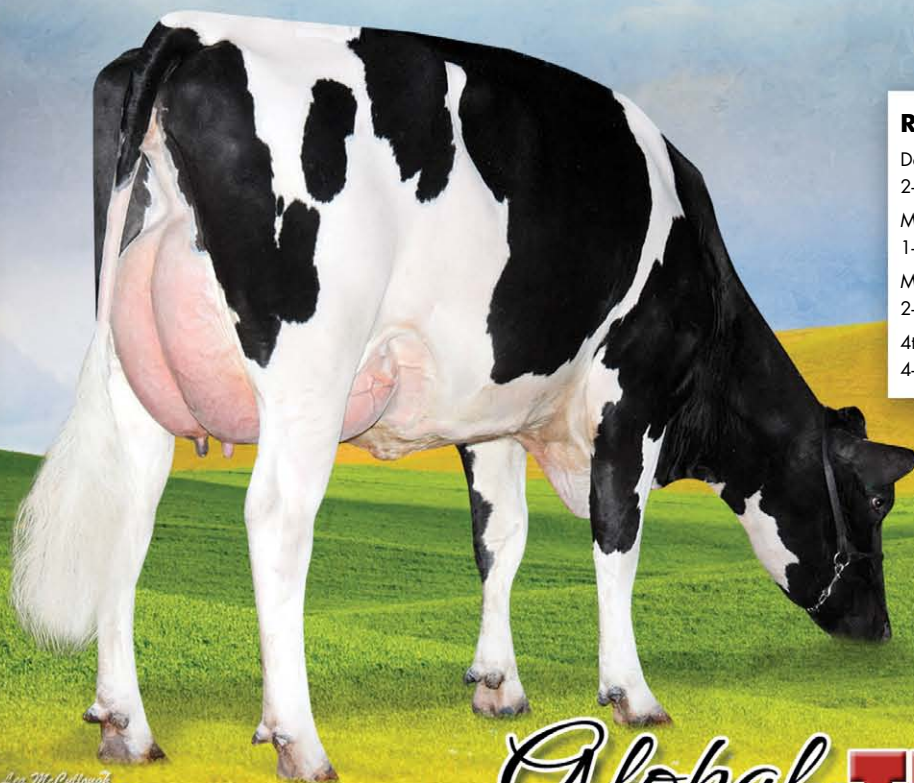
LL-M-Dairy S S Peru-ET, VG 85



Sarah Damrow



# SUPERSIRE



Lee McCullough

Wcd-Zbw Supersire  
Lafemme-ET, GP 83

## ROBUST X PLANET X SHOTTLE X O MAN

Dam: Ammon-Peachey Shauna-ET VG-87-DOM  
 2-01 3X 365D 15,964 kgM 4.1% 649 kgF 3.3% 520 kgP  
 MGD: Pine-Tree Martha Sheen-ET VG-86-DOM  
 1-11 3X 365D 14,186 kgM 4.2% 593 kgF 3.3% 467 kgP  
 MGGD: Pine-Tree Missy Martha-ET VG-86  
 2-02 3X 365D 15,786 kgM 3.6% 575 kgF 3.3% 516 kgP  
 4th Dam: Wesswood-HC Rudy Missy-ET EX-92-3E-GMD-DOM  
 4-11 3X 365D 18,582 kgM 4.1% 757 kgF 3.4% 630 kgP

Global **TPI** Leader!



**WORLD WIDE SIRES, LTD.**<sup>®</sup>

www.wwsires.com • Email: info@wwsires.com • Tel: 559.622.2222 • Fax: 559.741.2828



Product of the USA  
Supersire/151