

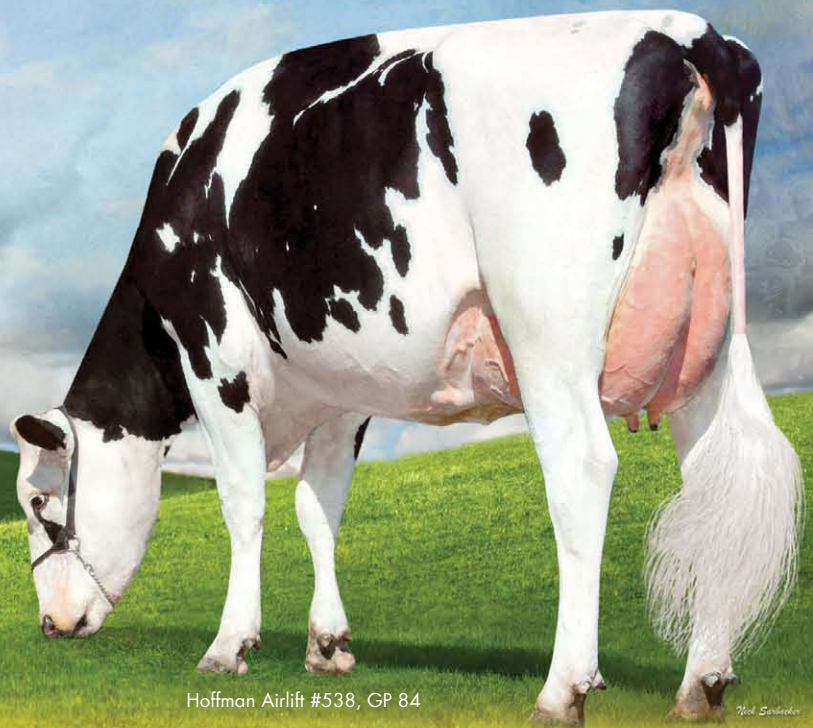


AIRLIFT

14HO06809 Canyon-Breeze At Airlift-ET
GW ATWOOD X SHOTTLE X MORTY

Reaching new heights!

FOR OUTSTANDING TYPE



Hoffman Airlift #538, GP 84

Royal-Vista Airlift #2711

ACCESS



WORLD WIDE INDEXES • WWW.WWSIRES.COM

The Complete Package!

FOR BREED-LEADING TYPE, OUTSTANDING FEET & LEGS AND PROFITABLE PRODUCTION!

AIRLIFT

GW ATWOOD X SHOTTLE X MORTY X BELLWOOD

Dam: Canyon-Breeze S Auburn-ET EX-90

3-04 3X 365D 15,950 kgM 3.8% 612 kgF 2.9% 465 kgP

MGD: Canyon-Breeze Mor Arliee-ET VG-85

2-04 3X 365D 15,636 kgM 3.6% 562 kgF 3.0% 466 kgP

MGGD: Canyon-Breeze Blw Alice-ET VG-87 GMD DOM

6-00 3X 365D 18,482 kgM 3.7% 691 kgF 3.2% 597 kgP

4th Dam: Canyon-Breeze Rtl Ammie-ET EX-91 2E GMD DOM

6-11 3X 305D 14,305 kgM 4.1% 590 kgF 3.4% 484 kgP

DAUGHTERS ARE TALL, DEEP AND OPEN-RIBBED WITH EXCELLENT DAIRY STRENGTH

WIDE RUMPS AND THE BEST FEET & LEGS IN THE BREED!

UDDERS ARE WIDE AND HIGH WITH VERY STRONG ATTACHMENTS AND CLOSE TEAT PLACEMENT

AIRLIFT IS A SOLID PRODUCTION SIRE FOR MILK



R-Vision Airlift Cheeze-It

Kingsway Airlift Gosling



WORLD WIDE SIRES, LTD.[®]

www.wwsires.com • Email: info@wwsires.com • Tel: 559.622.2222 • Fax: 559.741.2828



Product of the USA
Airlift/151